



Coastal Carolina Decorative Painters

# The Paint Drops

**President's Letter: Clare Majorossy May-Aug 2010**

**2010 Board Members:**

President - Clare Majorossy  
843.237.5182  
GCMAJOR@aol.com

First V.P. & Seminars -  
Mimi Hankins  
843.222.0612  
mimishooz@aol.com

Second V.P. & Programs -  
Laurel Barbour  
843.294.1454  
gbarbour@sc.rr.com

Treasurer - Ellen Banzaca  
843.235.8404  
ebanzaca@sc.rr.com

Secretary - Pat Egloff  
843.347.8867  
salvat@sccoast.net

**Committees:**

Historian - Mary Ann Turner  
843.423.0488  
maryann.turner@carolinahc.com

Publicity - Sally Arnett  
843.651.5179  
vitalesc@aol.com

Sunshine - Beverly Cratty  
410.636.2174  
jotoler@aol.com

Membership, Newsletter, & Website  
Sue Prine  
843.520.0337  
sue@sueprine.com

Christmas -  
Past presidents and other  
wonderful members

PRESIDENT'S LETTER - AUGUST 2010

As you no doubt noticed, we 'snail-mailed' this edition of the CCDP newsletter so we could grab your attention after our summer hiatus.

Time to get those paint brushes back in action and sign up for some of our great classes.

I just got back from the HOOT convention in Columbus, Ohio, along with Sue Prine and Karen Turner. Lin Tillman, Linda Blackman and Doris Young were also there - CCDP was well represented! For those of you who haven't heard of it, it's a convention put on by the Heart of Ohio Tole chapter and it's a lot of fun. If you've never attended a convention, I can really recommend this one. The accommodations are great, the classes are enjoyable, and they have a vendor show in which one can easily break one's budget!!!

Our next get-together will be on September 11<sup>th</sup> for our ornament class. Pat Smelkoff did a wonderful job designing the angel faces for us - I hope you will be able to join us at this annual event. Once you see the picture in this newsletter - how can you resist???

Sherry Allison and I are looking forward to leading the Santa candelabra class for you all in October. This project works up pretty quickly - and looks great. There will be a couple of them for 'show and tell' at the ornament class.

Cheri Rol's seminar in November already has a number of sign-ups - she's a very popular teacher and her pieces are beautiful. If oil paints are out of your comfort zone, I encourage you to give them a try anyway. There's more 'play time' with oils, and I find the blending easier. The cost of the class includes the surface and the oil paints.

There's also a picture in this newsletter of the project we'll be doing for our first seminar in 2011. I saw a finished sample of it at HOOT, and it was just beautiful. This has the makings of an heirloom piece; your many-times grands will be fighting over it in years to come. Check it out and reserve the date on your calendar.

See you all soon. Clare



## Happy Birthday Ladies...

Regina Wynn	10/01
Sandy Rader	10/01
Silvia Dillon	10/18
Deitrah L. Smith	10/25
Sally Arnett	10/26
Barbara Dieckmann	10/28

## Upcoming Events:

September 11  
Annual Ornament  
Pat Smelkoff

October 2  
Santa Candelabra  
Clare & Sherry

November 6-7  
Cheri Rol

December 4  
Christmas Party

...Visit our web site for the most recent information: <http://www.sueprine.com/CCDP...>

## Coastal Carolina Decorative Painters May 22, 2010

Myrtle Beach Golf and Yacht Club, Stefanie Roy Program

Clare Majorossy President, Meeting commenced at 9:05

A motion was made for acceptance of the March minutes as published in the newsletter.

The motions to accept were made by Dolores McMahon and Mary Ann Turner.

Treasurer's report- We have a balance of \$5,606.82

Clare reminded membership that there is a need for new board members for next year.

Christmas luncheon - We will try to have the luncheon at the North end this year. Restaurant suggestions were asked for.

Table cloths- starting in September, members are asked to bring their own tablecloths.

Blank greeting cards were distributed for our SDP community project. Members were asked to paint them and return them in September.

The next newsletter will be snail-mailed mailed out as a way to grab members' attention at the end of the summer hiatus. It will also be available on the website as always.

Seminar report- Clare standing in for Mimi said that the Cheri Rol seminar was priced at \$100.00

Program report- Laurel brought in the surfaces for the Sept. and Oct. programs and signups were taken.

Ellen showed how to retro-fit an electric knife into a paint shaker.

Motion to end the meeting at 9:25 was approved by Charlotte Novak and Doris Young.

Respectfully submitted by

Pat Egloff, sec.

---

## Service project for 2010

We are planning to hand out blank greeting cards for members to paint over the summer. Designs should be suitable for any occasion. Each member will get 3 cards, and we are asking that you include a stamp on the envelopes when you return them. We have the name of an organization that will get them to servicemen and women, who can use them to send to their families. If you can't make Stef's program in May, please stop by the Myrtle Beach Golf and Yacht club to pick up your cards that day, or contact any board member and we will make arrangements to get the cards to you. We would like them returned at the September 11<sup>th</sup> annual ornament meeting.



## September 11, 2010 Annual Ornament Program



**Taught by:** Pat Smelkoff

**Location:** Myrtle Beach Golf and Yacht Club  
**Cost:** FREE  
**Signup:** Laurel Barbour 843.294.1454  
gbarbour@sc.rr.com

**Prep:**

Antoinette Cox Angel Ornament-revised and taught by Pat Smelkoff

1. Sand edges of the ornament.
  2. Lightly trace only the large areas of the pattern.
  3. Base the face and neck: Santa's Flesh-Delta or skin color of choice (3 coats) Halo: Yellow Ochre (2 coats) Collar: Vintage White [F.A.] or off white of choice (2 coats) Wings: French Grey Blue [Deco] or Cape Cod Blue [Delta] or Settler's Blue or Williamburg Blue (2 coats)
  4. Lightly trace wing design/shapes with white graphite.
  5. Lightly trace features with Black or Grey graphite. Also trace the linework. Bring to class your base colors, sta-wet palette and acrylic brushes. Hope you have fun painting these angels for your Christmas decor!!!
- FOOTNOTE: Per Pat Smelkoff,  
DO NOT USE SEALER WITH YOUR BASE COAT!!!

**Supplies:** Bring your general acrylic supplies.  
Don't forget your lunch.

---

## October 2, 2010 Santa Candelabra



**Taught by:** Clare Majorossy and Sherry Alison

**Location:** Myrtle Beach Golf and Yacht Club  
**Cost:** \$25, includes surface and candles  
**Signup:** Laurel Barbour 843.294.1454  
gbarbour@sc.rr.com

**Supplies:** Bring your general acrylic supplies, and your own paint.  
Don't forget your lunch.

## November 6-7, 2010



Taught by: Cheri Rol

**Location:** Myrtle Beach Golf and Yacht Club  
**Cost:** \$100, includes paints and masonite board 9 x 12  
**Signup:** Mimi Hankins 843.222.0612  
mimishooz@aol.com  
**Supplies:** Bring your oil supplies.  
Don't forget your lunch.

---

## December 4, 2010



## February 6-7, 2011



Taught by: Becky Wisniewski

**Location:** Myrtle Beach Golf and Yacht Club  
**Cost:** tbd  
**Signup:** Mimi Hankins 843.222.0612  
mimishooz@aol.com  
**Supplies:** Bring your general acrylic supplies.  
Don't forget your lunch.

---

SAVE THE DATES:

April 2-3, 2011

Patti Rawlinson

October 1-2, 2011

Rosemary West

...Visit our web site for the most recent information: <http://www.sueprine.com/CCDP...>

# Sign-ups

All checks should be made out to CCDP.

Name \_\_\_\_\_

Phone \_\_\_\_\_

**September 11  
Annual Ornament**

**Mail to:**  
Laurel Barbour  
1606 S. Highgrove Court  
Myrtle Beach, SC 29575  
gbarbour@sc.rr.com

Saturday

Cost  
**FREE**

Name \_\_\_\_\_

Phone \_\_\_\_\_

**October 2  
Santa Candelabra**

**Mail to:**  
Laurel Barbour  
1606 S. Highgrove Court  
Myrtle Beach, SC 29575  
gbarbour@sc.rr.com

Saturday

Cost  
\$25

Name \_\_\_\_\_

Phone \_\_\_\_\_

**November 6-7  
Cheri Rol**

**Mail to:**  
Mimi Hankins  
P.O.Box 3685  
N. Myrtle Beach, SC 29582 mimi-  
shooz@aol.com

Saturday & Sunday

Cost  
\$100

## COASTAL CAROLINA DECORATIVE PAINTERS MEMBERSHIP APPLICATION

(Please print)

Name: \_\_\_\_\_ SDP#: \_\_\_\_\_

Address: \_\_\_\_\_ City: \_\_\_\_\_ State: \_\_\_ Zip: \_\_\_\_\_

Alternate Address: \_\_\_\_\_

Phone: \_\_\_\_\_ Email: \_\_\_\_\_

Membership Type: (New) \_\_\_\_\_ (Renewal) \_\_\_\_\_ Birth Date: \_\_\_\_\_

Annual dues are \$15.00. (\$7.50 after July 1st)  
Please address check to CCDP

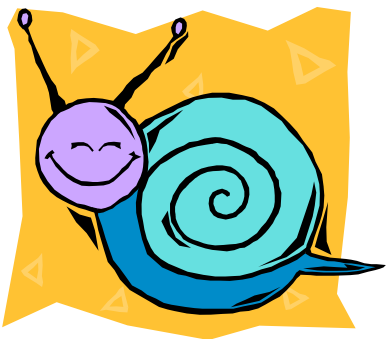
**Mail to:**  
Sue Prine  
2427 Wedgefield Road  
Georgetown, SC 29440

**Coastal Carolina Decorative Painters**

Sue Prine

2427 Wedgefield Road

Georgetown, SC 29440



Please let us know if we can remove your name from our snail-mail list, it will save our chapter mailing costs if you could retrieve your own copy from the web site.

<http://www.sueprine.com/CCDP/newsletters.asp>

Thanks!